



**IJCR**

Vol 06 issue 08

Section: Healthcare

Category: Research

Received on: 17/12/13

Revised on: 19/01/14

Accepted on: 22/02/14

## STUDY OF NOSOCOMIAL URINARY TRACT INFECTIONS WITH SPECIAL REFERENCE TO CANDIDURIA AT BLDEU'S SHRI B.M.PATIL MEDICAL COLLEGE AND HOSPITAL, BIJAPUR, KARNATAKA

Raj Mohammed D. Malled, Prashant K. Parandekar, Annapurna G. Sajjan

Department of Microbiology, Shri B.M. Patil Medical College, Bijapur, Karnataka, India

E-mail of Corresponding Author: rajmohammed7171@gmail.com

### ABSTRACT

**Background of the study:** Nosocomial urinary tract infections are the most common of hospital acquired infections comprising about 40%. Majority are related to catheterization or other predisposing factors. Candiduria is rarely encountered in otherwise healthy people with structurally normal urinary tract. It is however of common occurrence in hospitalized patients. *Candida* spp. account for almost 10-15% of nosocomial urinary tract infections.

**Objectives:** Present study was undertaken to identify various pathogens causing nosocomial UTI, and further study including identification of yeasts and to analyze the various risk factors associated with candiduria in hospitalized patients.

**Methodology:** 195 urinary isolates of patients admitted in hospital >3 days were screened. The bacterial and yeast isolates were identified by conventional methods.

**Results:** Of the 195 samples from the cases of suspected nosocomial UTI screened, 131(67.17%) yielded growth, amongst which 17 (12.9%) were *Candida* species. Amongst the bacterial isolates, *E.coli* (38.16%) was the most common followed by *Citrobacter* spp. (16.0%), *Klebsiella pneumoniae* (12.2%) and others. Whereas, among the *Candida* isolates *C. tropicalis* (41.1%) was found to be predominant followed by *C. guilliermondi* (23.5%), *C. albicans* (17.6%), *C. krusei* (11.7%) and *C.glabrata* (5.8%). Majority of the patients were having various predisposing factors.

**Conclusion:** Non albicans species were predominant amongst the *Candida* isolates, majority of patients were having predisposing factors emphasizing the need of proper surveillance of nosocomial UTI for appropriate treatment.

**Keywords:** Nosocomial UTI, Candiduria, non-albicans *Candida*

### INTRODUCTION

Urinary tract infections (UTIs) are the most common nosocomial infections which account for about 40% of all hospital – acquired infections and constitute a major source for nosocomial septicemia and related mortality in acute care hospitals.<sup>1</sup>

The vast majority of UTIs occur in patients with temporary indwelling catheters.<sup>1,2,3,4</sup> The microorganisms usually responsible for catheter –

associated UTIs are derived from the fecal flora native to the patient or originate in the hospital environment.<sup>1</sup> They include *Escherichia coli*, *Enterococcus* species, *Pseudomonas aeruginosa*, *Klebsiella pneumoniae*, *Proteus mirabilis*, *Staphylococcus aureus*, *Staphylococcus epidermidis* and *Candida* species.<sup>2,4</sup>

An increasingly important subgroup of nosocomial urinary tract infections are those due to fungi, and almost all fungal urinary tract infections are

caused by *Candida* spp.<sup>5</sup> The predisposing factors frequently associated with candiduria are urinary tract instrumentation, prior surgical procedures, recent use of antibiotics, prolonged hospital stay, extremes of age, diabetes mellitus, female sex and use of immunosuppressive therapy.<sup>6,7</sup>

Candiduria or presence of *Candida* spp. in the urine is a relatively rare finding in otherwise healthy people.<sup>8</sup> The presence of Candiduria may reflect only colonization of the bladder, perineum, or indwelling urinary catheter.<sup>9</sup> It is rarely encountered as a community acquired infection in a structurally normal urinary tract as they usually present as complicated nosocomial infections. *Candida* spp. accounts for almost 10-15% of nosocomial urinary tract infections.<sup>10</sup> The recovery of *Candida* species from urine samples presents the clinician with a diagnostic dilemma as to whether the presence of candiduria in a patient represents contamination, colonization or true infection.<sup>8</sup> Though contamination of urine sample is very common, it can be ruled out by obtaining a second sterile urine sample. But till date, there are no reliable methods of differentiating colonization of urinary tract from true UTI with *Candida* spp.<sup>8,10</sup>

The specific identification of *Candida* spp. is important as it provides information in the choice of treatment, because *C.glabrata* and *C.krusie* are naturally resistant to fluconazole.<sup>11</sup> Though *Candida albicans* is the most frequently isolated species, few observers have emphasized the changing microbial trends towards non-*albicans* *Candida* species.<sup>10,12</sup>

Hence, the present study was undertaken with the objective of identifying various pathogens incriminated in nosocomial UTI, to speciate the yeasts isolated in these infections and to analyze the various risk factors associated with candiduria.

## METHODOLOGY

The study was undertaken after clearance from institutional ethical committee at BLDEU's Shri B.M.Patil Medical College and Hospital, Bijapur,

Karnataka from March 2012 to January 2013. After taking informed consent from the patients, a total of 195 urine samples of patients admitted in hospital for >3days were screened.

### Case definition

Patient has at least one of the following signs or symptoms with no other recognized cause: fever (>38° C), urgency, frequency, dysuria, or suprapubic tenderness and patient has a positive urine culture, that is,  $\geq 10^5$  microorganisms per cm<sup>3</sup> or urine with no more than two species of microorganisms, as per the CDC definitions (Criteria 1) of nosocomial infections.<sup>13</sup>

### Inclusion criteria

Patients admitted in the hospital for more than 3 days.

Pure growth from urine sample with significant colony count of 10<sup>4</sup> colony forming units (cfu)/ml for *Candida* and 10<sup>5</sup> cfu/ml in case of bacteria were included.<sup>8</sup>

The specimen yielding *Candida* isolates were further subjected to repeat urine cultures. The *Candida* species reisolated after repeat culture were included in the present study.

### Exclusion criteria

Absence of pyuria / mixed growth in the culture.

Duration of admission in hospital is less than 3 days.

*Candida* species failed to be isolated on repeat culture.

In the Patients with candiduria, demographic details such as age, sex, duration of hospital stay, duration of catheterization and other clinical details were noted. Presence of other associated risk factors like diabetes mellitus, history of antibiotic use, any urinary tract instrumentation, any surgical procedures carried out on the patient or use of immunosuppressive drugs were also recorded.

### Urine sample processing

In case of non-catheterized patients a clean catch midstream urine samples were collected, whereas in catheterized patients sterile urine specimens

were obtained via syringes after cleaning the catheters with an antiseptic solution.<sup>14</sup> After direct microscopic examination in the form of wet mount and Gram stained smears, the urine samples were inoculated on Cysteine Lactose Electrolyte Deficient (CLED) and MacConkey's agar using standard loop as per the semi quantitative culture technique. Moreover, the specimens showing budding yeast like cells on direct examination were inoculated on Sabourauds Dextrose Agar (SDA). The further incubation of these media was done at 37°C temperature for 16-24 hours followed by identification by using conventional methods. The specimens yielding no growth after 16-24 hours were further incubated upto 48 hours and regarded as sterile if there is no growth.<sup>15</sup>

The Yeast cells identified on Microscopy are processed further for identification as follows

- a. Germ tube test – the Candida cultures were treated with human serum and incubated at 37°C for 2-4 hours. A drop of the suspension is examined on the slide under the microscope. The germ tubes are seen as long tube like projections extending from the yeast cells.<sup>16</sup>
- b. Chlamydospore formation - the Candida isolates were grown on the corn meal agar (CMA) plate and incubated at 25°C for 2-3 days and later examined for microscopic morphology of the chlamydospores for identification of various Candida species.<sup>16</sup>

### Statistical analysis

The results wherever applicable were analyzed by Fischer's exact test for statistical significance by using Graphpad In Stat 3. The *P* value was calculated for determining whether the results obtained were statistically significant. *P* value of <0.05 was considered as statistically significant.

## RESULTS

The present study includes 195 samples from the cases of suspected nosocomial UTI of which 131(67.17%) yielded growth amongst which 17 (12.9%) were Candida species.

The most commonly isolated organism was *Escherichia coli*-50 (38.16%), followed by *Citrobacter spp.*-21 (16.03%), *Klebsiella pneumoniae* -16 (12.21%) and others (Table 1.)

### Demographic profile with regards to candiduria:

Majority of the patients with candiduria belonged to age group > 61 years (35.3%) followed by age group 46-60 years (29.4%). (Table 2.) Amongst 94 culture positive males 11 (11.7%) showed candiduria whereas out of 37 culture positive females 6(16.2%) cases revealed candiduria (fisher's exact test, *P* value = 0.565).

Other associated risk factors of the study group are shown in Table 3. The average length of hospitalization during which candiduria developed was 14.9±6 days. The risk of developing candiduria was high in patients after 11.6±6 days of catheterization. Antibiotic usage was seen with all the patients for the duration of 5 to 8 days. Whereas one patient of candiduria was on fluconazole for 10 days in which *Candida krusei* was isolated. Moreover one case was on corticosteroids.

7 of the 17 patients (41.1%) were diabetic, and 6 (35.2%) were having associated urinary tract abnormality such as benign hypertrophy of prostate, renal and ureteric calculi.

In the present study, amongst the cases of candiduria, non-albicans *Candida spp.* were the predominant species recovered responsible for 82.3% of nosocomial UTI. *Candida albicans* accounted for only 17.6% of nosocomial UTI. Amongst Non albicans *Candida* species, *Candida tropicalis* accounted for majority of the cases (41.1%). Distribution of various *Candida spp.* is given in table 4.

## DISCUSSION

In the recent past, medical and surgical advances in the areas of medical technologies, have markedly altered the hospitalized patient populations leading to survival of greater number

of hospitalized patients who are severely ill. These patients are at increased risk of nosocomial infections. Nosocomial infections constitute a serious public health problem, as they are a major cause of morbidity and mortality, and cause an increased time of hospitalization with associated enhanced healthcare costs.<sup>12</sup> Therefore we studied a spectrum of organisms causing nosocomial urinary tract infections with special emphasis on nosocomial candiduria.

In the present study we observed that *Escherichia coli* was the most common organism isolated (38.16%) followed by *Citrobacter spp* (16.03%), *Klebsiella pneumoniae* (12.21%) and *Candida spp.*(12.97%). Whereas, Kamat U *et al.*<sup>17</sup> showed *E.coli* (49.1%), as the most common pathogen followed by *P.aeruginosa* (12.72%), *Klebsiella spp.* (12.7%) and *Candida albicans* (10.9%) in a similar study. Another study by Savas *et al.*<sup>18</sup> demonstrated *E.coli* (31.4%) as the most common pathogen followed by *Candida spp.* (21.3%), *Klebsiella spp.*(10.6%) and *Enterococci* (6.9%).

Our study revealed 12.97% of the isolates to be *Candida spp.* Similar observation was noted by Kamat U *et al.*<sup>17</sup> who reports 10.9%. Whereas, Savas *et al.*<sup>18</sup> reported 21.3% of the UTIs caused by *Candida spp.* This may be perhaps because of difference in the sampling techniques and antibiotic prescribing trends in the hospital.

Of the *Candida* isolates in our study, 17.6% were *Candida albicans*, whereas 82.4% were *Candida non-albicans*. Amongst overall isolation of *Candida* species, *C.tropicalis* was found to be the predominant *Candida spp.* accounting for 41.1%, followed by *C.guilliermondii* 23.5%, *C.albicans* 17.6%, *C.krusei* 11.7% and *C.glabrata* 5.8%. Many previous studies reported *Candida albicans* as the predominant species such as a study conducted by Febre N *et al.*<sup>11</sup> who showed that *C.albicans* was isolated in 46.1%. Similarly Sobel JD *et al.*<sup>19</sup> reported *C.albicans* in 50% of the cases followed by non-*albicans Candida spp.* Whereas a study conducted by Paul N *et al.*<sup>20</sup> which showed *C.albicans* in 19% and *C.tropicalis* in 43% of the

cases and a study by Jain M *et al.*<sup>10</sup> revealed *C.albicans* in 28.6%, *C.tropicalis* in 52.9% and *C.glabrata* in 1.4% of the cases which are in accordance with our study. These findings suggests that there is a changing trend towards *Candida non-albicans* which might be due to the selection of less susceptible species by antifungal agents such as fluconazole.<sup>7</sup> Analogous observation was seen in one case in our study group on fluconazole therapy in which *Candida krusei* was isolated.

We found that candiduria was apparently more common in females (16.2%). This finding is well in accordance with other researchers also.<sup>6,8,19</sup> But this statistical analysis revealed that there is no significant association of candiduria in females by fisher's exact test ( $P$  value = 0.565). There have been few other observers who did not find significant difference in terms of female sex having more chances of candiduria.<sup>14</sup> This may be perhaps be explained by associated various risk factors such as age, immunocompromised status, antibiotic therapy, instrumentation etc.

We observed that nosocomial UTI due to *Candida spp.* was more common in the age groups >61 yrs, which is well in accordance with other researchers.<sup>10</sup>

Diabetes mellitus was seen in 41.1% of the patients with candiduria in present study. This is in agreement with the study conducted by Kauffman CA *et al.*<sup>5</sup> who noted diabetes mellitus in 39% of candiduria in their study. Patients with diabetes are at increased risk for UTIs due to *candida spp.* Diabetes may predispose patients to fungal candiduria by predisposing them to *Candida* colonization, by enhancing urinary fungal growth in the presence of glycosuria, by lowering host resistance to invasion by fungi as a consequence of impaired phagocytic activity, and by promoting stasis of urine in a neurogenic bladder.<sup>8</sup>

Previous history of antibiotic use was seen in all the patients with candiduria. In a study by Guler S *et al.*<sup>14</sup> 88.2% of the cases with candiduria were on the antibiotics, whereas Passos XS *et al.*<sup>7</sup> noted

antibiotic use in all the patients with candiduria. Our finding is well in accordance with latter. Antimicrobial treatment was reported to be a risk factor for candiduria in 70-100% in various studies. It has been reported that approximately 30% of the adults gastrointestinal tract is colonized by *Candida* species and the colonization rates approached to 100% in patients receiving antibiotics.<sup>8</sup> Antibiotic use suppresses susceptible endogenous bacterial flora in the gastrointestinal and lower genital tract and favors the colonization of epithelial surface with fungal species, thus increasing the chance of introducing the organisms into the urinary tract specially in the presence of indwelling urinary devices.<sup>7</sup>

In the present study 58.8% of the patients with candiduria were catheterized and the mean duration of catheterization was  $11.6 \pm 6$  days. Similar results were obtained by Passos XS *et al.*<sup>7</sup> who verified that 92.6% of the patients with candiduria had urinary catheter. Urinary catheters serve as a portal of entry and most catheters become colonized if left for longer duration. There is a direct relationship between the duration of catheterization, candidal colonization and of nosocomial candiduria.<sup>10</sup> With short term catheterization (upto 7 days), 10-50% patients develop infections, whereas in long term catheterization (>28 days), usually all patients develop urinary tract infection. The risk of catheter associated infections increases by approximately 10% for each day.<sup>21</sup> With this observation we recommend that catheterization should be conducted when it is dire essential and for short duration as early removal of the urinary catheters lessens the burden of UTIs.

In the present study associated urinary tract abnormality was seen in 35.2% of the cases and previous surgery in 17.6% of the cases. According to literature,<sup>22</sup> obstruction to urinary flow at all levels is a key factor in increasing host susceptibility to UTI. Obstruction inhibits the normal flow of urine and the resulting stasis compromises bladder and renal defense

mechanisms. Stasis also contributes to the growth of bacteria in the urine and their ability to adhere urothelial cells. Perhaps the similar mechanisms may be playing role for the colonization and invasion of *Candida* species in the cases of candiduria in our study group.

Although the number of *Candida* species studied were limited, the present study highlights the increasing importance of candiduria in hospitalized patients with various risk factors which should not be ignored. Careful vigilance and monitoring of such cases is of utmost importance. Appropriate diagnosis of causative agent is essential as it impacts the therapy of these patients. Moreover, changing trend of *Candida* species towards non-albicans *Candida* species is being increasingly reported. Thus appropriate speciation of *Candida* is crucial for further management of these cases. This is necessary as the non-albicans *Candida* species such as *C.glabrata* and *C.krusie* are resistant to fluconazole which is commonly prescribed drug for the treatment.

## CONCLUSION

*Escherichia coli* is the most frequent uropathogen isolated from nosocomial UTIs. *Candida* spp. are more common in patients admitted in hospital for prolonged periods in presence of other risk factors such as urinary catheterization, diabetes, previous surgeries, associated urinary tract abnormality and older age groups. Our study emphasizes the fact that there is a change in trend with shift towards non-albicans *Candida* spp. as the predominant pathogen causing nosocomial UTI which are more difficult to treat. Thus speciation should be performed for appropriate management of such patients.

## ACKNOWLEDGEMENTS

Authors acknowledge the immense help received from the scholars whose articles are cited and included in references of this manuscript. The authors are also grateful to authors / editors /



publishers of all those articles, journals and books from where the literature for this article has been reviewed and discussed.

## REFERENCES

1. Taher MT, Golestanpour A. Symptomatic nosocomial urinary tract infections in ICU patients: identification of antimicrobial resistance pattern. *Iranian journal of Clin Infect Dis* 2009;4(1):25-29.
2. Kyschi MF, Namias N. Nosocomial urinary tract infection. *Surg Clin N Am* 2009; 89: 475-481.
3. Maldonado SIC, Luna JAC. Nosocomial Urinary Tract Infections In: Dr. Ahmad Nikibaksh, editors. *Clinical management of complicated urinary tract infection*, Croatia: InTech Europe; 2011:225-238.
4. Khan BA, Saeed S, Akram A, Khan FB, Nasim A. Nosocomial uropathogens and their antibiotic sensitivity patterns in a tertiary referral teaching hospital in Rawalpindi, Pakistan. *J Ayub Med Coll Abbottabad* 2010;22 (1):11-12.
5. Kauffman CA, Vazquez JA, Sobel JD, Gallis HA, McKinsey DS, Karchmer AW et al. Prospective multicenter surveillance study of funguria in hospitalized patients. *Clin Infect Dis* 2000;30:14-8.
6. Bukhary ZA. Candiduria: A review of clinical significance and management. *Saudi J Kidney Dis Transplant* 2008;19(3):350-360.
7. Passos XS, Sales WS, Maciel PJ, Costa CR, Miranda KC, Lemos JA, *et al.* Candida colonization in intensive care unit patients' urine. *Mem Inst Oswaldo Cruz* 2005;100(8):925-8.
8. Lundstrom T, Sobel J. Nosocomial candiduria: A review. *Clin Infect Dis* 2001; 32:1602-7.
9. Kauffman CA. Candiduria. *Clin Infect Dis* 2005; 41:S371-6.
10. Jain M, Dogra V, Mishra B, Thakur A, Loomba PS, Bhargava A. Candiduria in catheterized intensive care unit patients: Emerging microbiological trends. *Indian J of Pathol Microbiol* 2011;54(3):552-5.
11. Febré N, Silva V, Medeiros EAS, Wey SB, Colombo AL, Fischman O. Microbiological characteristics of yeasts isolated from urinary tracts of intensive care unit patients undergoing urinary catheterization. *J Clin Microbiol* 1999;37(5):1584-86.
12. Silva S, Negri M, Henriques M, Oliveira R, Williams D, Azeredo J. Silicone colonization by non-Candida albicans Candida species in the presence of urine. *J Med Microbiol* 2010;59: 747- 754.
13. Garner JS, Jarvis WR, Emori TG, Horan TC, Hughes JM. CDC definitions for nosocomial infections. In: Olmsted RN, ed.: *APIC Infection Control and Applied Epidemiology: Principles and Practice*. St. Louis: Mosby; 1996: pp. A1-20.
14. Guler S, Ural O, Findik D, Arslan U. Risk factors for nosocomial candiduria. *Saudi Med J* 2006; 27(11):1706-10.
15. Forbes BA, Sahn DF, Weissfeld AS. *Baily and Scott's Diagnostic Microbiology*. 10<sup>th</sup> Ed. Mosby Elsevier, Missouri, US 1998:842-856.
16. Chander J. *Textbook of Medical Mycology*, 3<sup>rd</sup> Ed. Mehta publishers, New Delhi, India 2011: p278.
17. Kamat US, Fereirra A, Amonkar D, Motghare DD, Kulkarni MS. Epidemiology of hospital acquired urinary tract infections in a medical college hospital in Goa. *Indian J of Urology* 2009; 25(1):76-80.
18. Savas L, Guvel S, Onlen Y, Savas N, Duran N. Nosocomial urinary tract infections: micro-organisms, antibiotic sensitivities and risk factors. *West Indian med J* 2006; 55(3):188-93.
19. Sobel JD, Kauffman CA, McKinsey D, Zervos M, Vazquez JA, Karchmer AW et al. Candiduria: A Randomized, Double-Blind Study of Treatment with Fluconazole and Placebo. *Clin Infect Dis* 2000;30:19-24.

20. Paul N, Mathai E, Abraham OC, Mathai D. Emerging microbiological trends in candiduria. Clin Infect Dis 2004;39:1743-4.
21. Bose S, Ghosh AK, Barapatre R. The incidence of Candiduria in an ICU – A study. Journal of Clinical and Diagnostic Research 2011; 5(2): 227-230.
22. Schaeffer AJ, Schaeffer EM. Infections of the Urinary Tract. In: Wein AJ, Kavoussi LR, Novick AC, Partin AW, Peters CA editors. Campbell – Walsh Urology. 10<sup>th</sup> Ed. Vol 1. Elsevier Saunders, Philadelphia, USA 2012. P. 257-327.

**TABLES**

**Table1. Distribution of organisms isolated in the study group**

Bacterial isolates	Number (%)
Escherichia coli	50(38.16)
Citrobacter spp	21(16.03)
K.pneumoniae	16(12.21)
P. aeruginosa	7(5.34)
Proteus spp	6(4.58)
Enterococcus spp	5(3.8)
Acinetobacter spp	4(3.05)
S.aureus	3(2.29)
CoNS	1(0.76)
E.coli + Klebsiella	1(0.76)
Candida species	17(12.97)
Total	131(100)

**Table 2: Age distribution of the candiduria patients**

Age group (yrs)	Number	Percentage
16-30	2	11.7
31-45	4	23.5
46-60	5	29.4
≥61	6	35.3

**Table 3: Various risk factors in patients with candiduria**

	Number (n=17)	Percentage
Antibiotics	17	100
Catheterized	10	58.8
Diabetes	7	41.1
Fever	7	41.1
Associated urinary tract abnormality	6	35.2
Previous surgery	3	17.6
Mean duration of catheterization	11.6 days±6 (range 4-24)	
Mean duration of Hospital stay	14.9 days±6(range 4-30)	

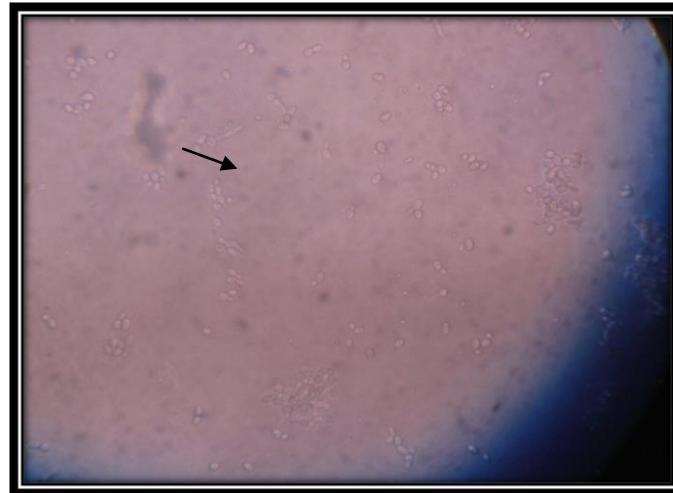
**Table 4: Distribution of various Candida isolates in the study group**

Candida species	Number	Percentage
C.albicans	3	17.6
<i>Candida non albicans</i>	14	82.3
Candida tropicalis	7	41.1
Candida guilliermondi	4	23.5
Candida krusei	2	11.7
Candida glabrata	1	5.8
Total	17	100

**PHOTOGRAPHS**

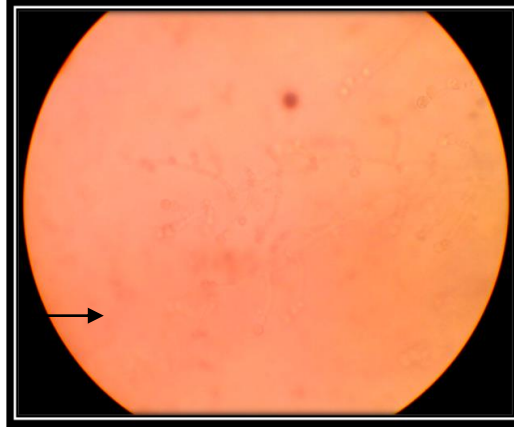


**Fig 1. Dalmau plate culture on Corm Meal Agar**

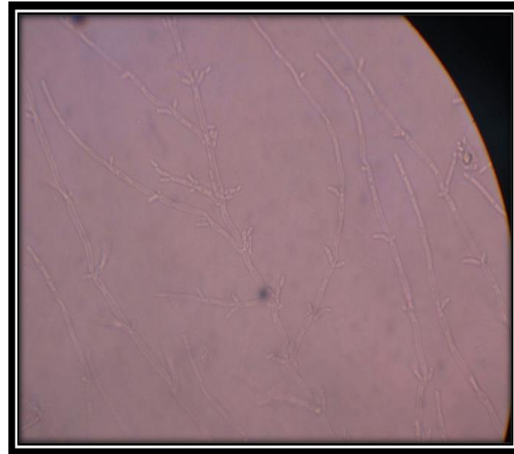


**Fig 2. Germ Tube Formation**

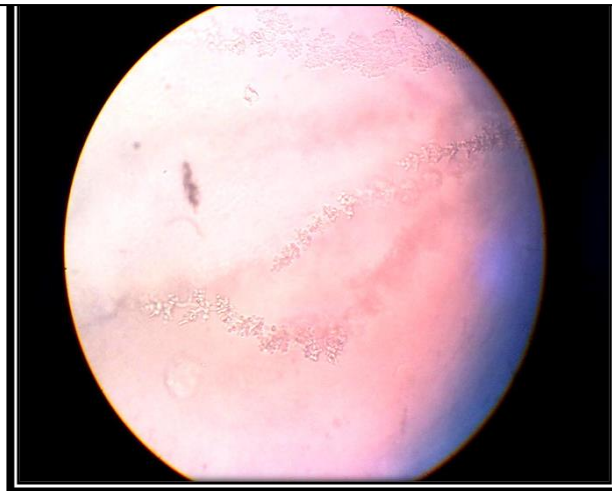




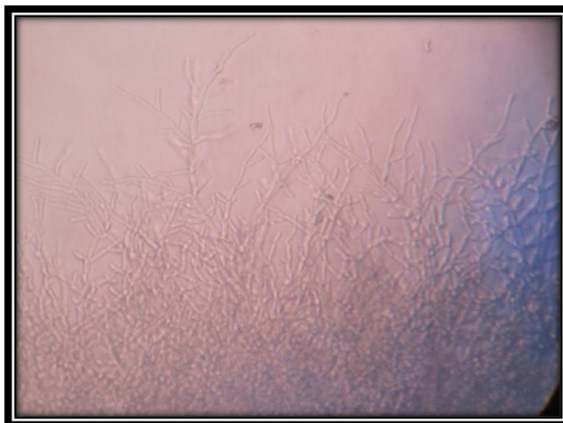
**Fig 3. Terminal Chlamydospore formation of *Candida albicans***



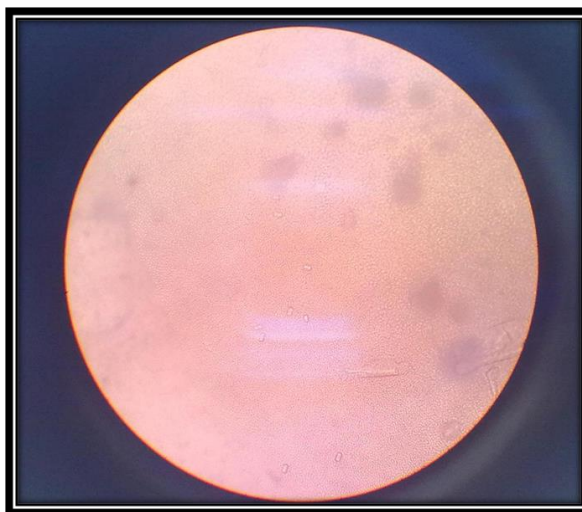
**Fig 4. Microscopic appearance of *C.tropicalis* on Corn Meal Agar**



**Fig 5. Microscopic appearance of *C.guilliermondii* on Corn Meal Agar**



**Fig 6. Microscopic appearance of *C. krusei* on Corn Meal Agar**



**Fig 7. Microscopic appearance of *C. glabrata* on Corn Meal Agar**